

CITY OF ASHEVILLE

RIVER ARTS ROW

Reimagining Murray Hill Park and the 'Missing Middle' to provide a sustainable future for medium-density infill housing on Asheville's hilly terrain.

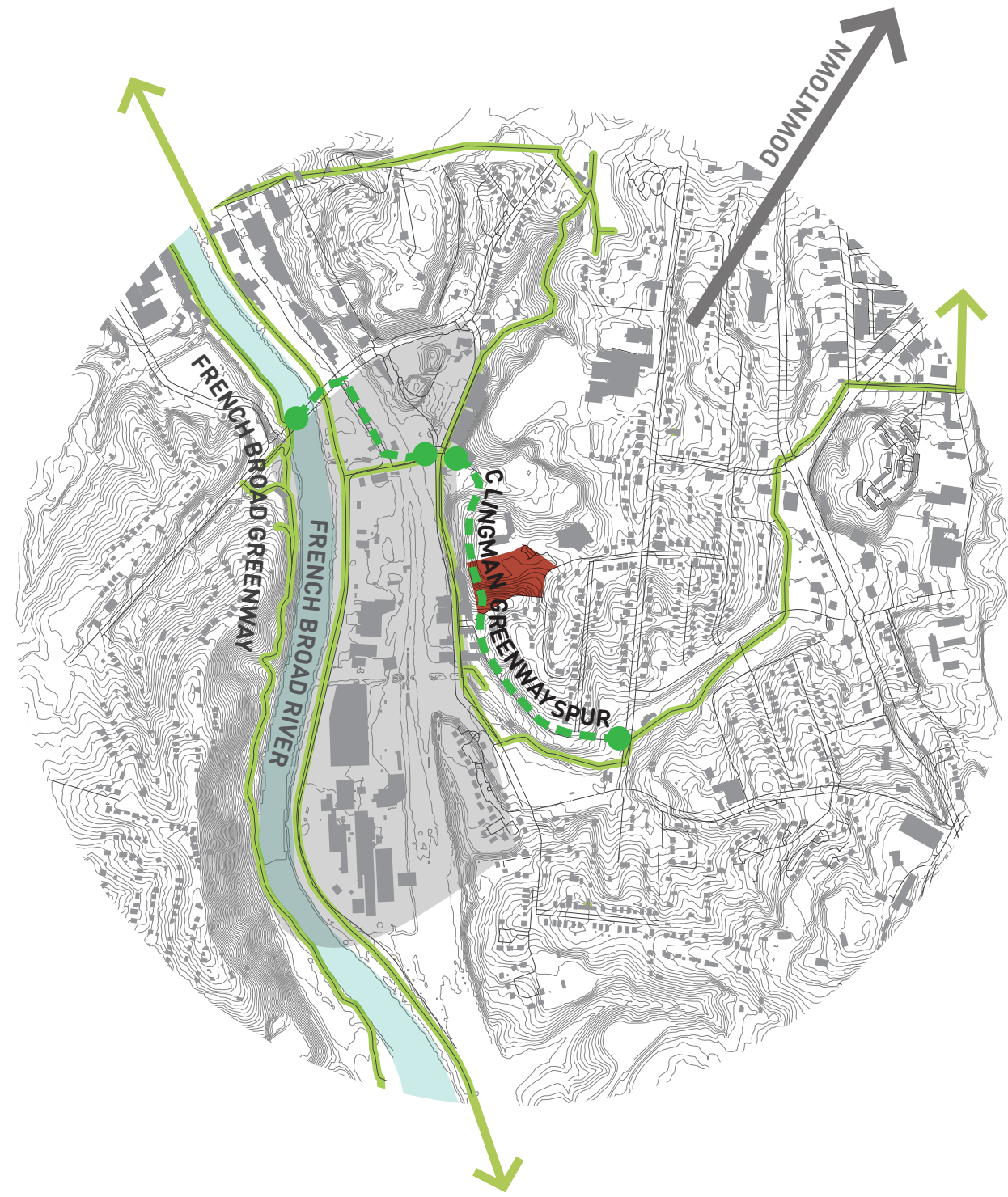


URBAN TAPESTRY

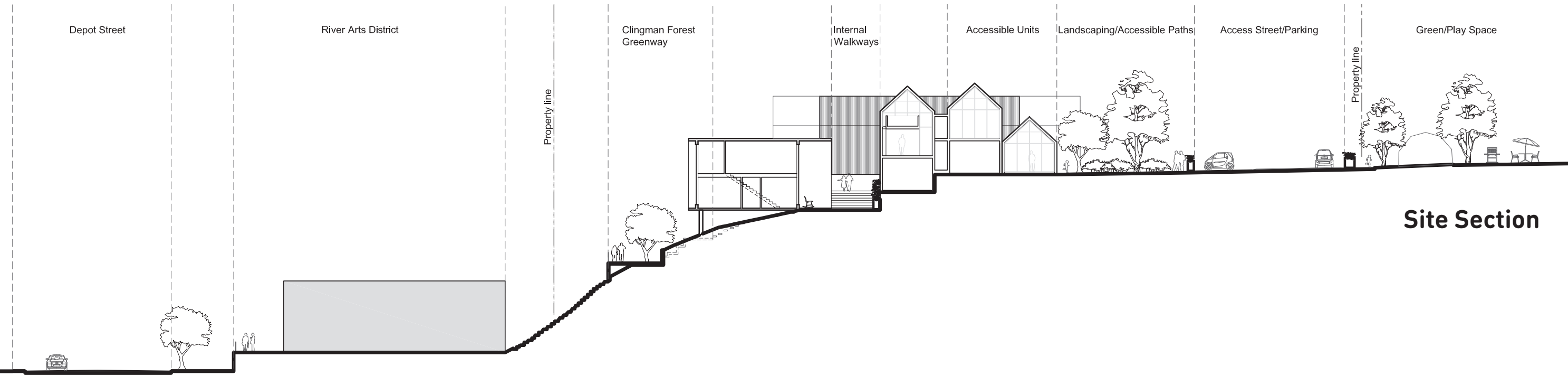
Weaving River Arts District and Murray Hill neighborhood together

Taking cues from both the vernacular hilltowns of Appalachia and densely built cities such as San Francisco, we organized the site in an orthogonal grid-like overlay to the existing topography. In an effort to minimally disturb the land, the 4-5 unit row houses shift vertically and horizontally depending on where they are sited. A series of layered decks and walkways glues the clusters together, creating an internal network of collective spaces, vegetable gardens and recreational areas.

A new proposed route for the Clingman Forest Greenway is positioned along the western edge of the site, dotted with eddy-like nodes of terraced seating and gathering space. "Missing teeth" such as the area north of Pizza Pura have the potential to be filled in with programmatic activities such as outdoor theater performances. Informal stepped walking paths allow residents to move from the greenway and lower parking areas up to the internal decks and upper parking/green space.



Site Plan



Site Section

CLINGMAN GREENWAY

Connecting downtown Asheville to the River Arts Community



Bartlett Ave and Clingman Greenway