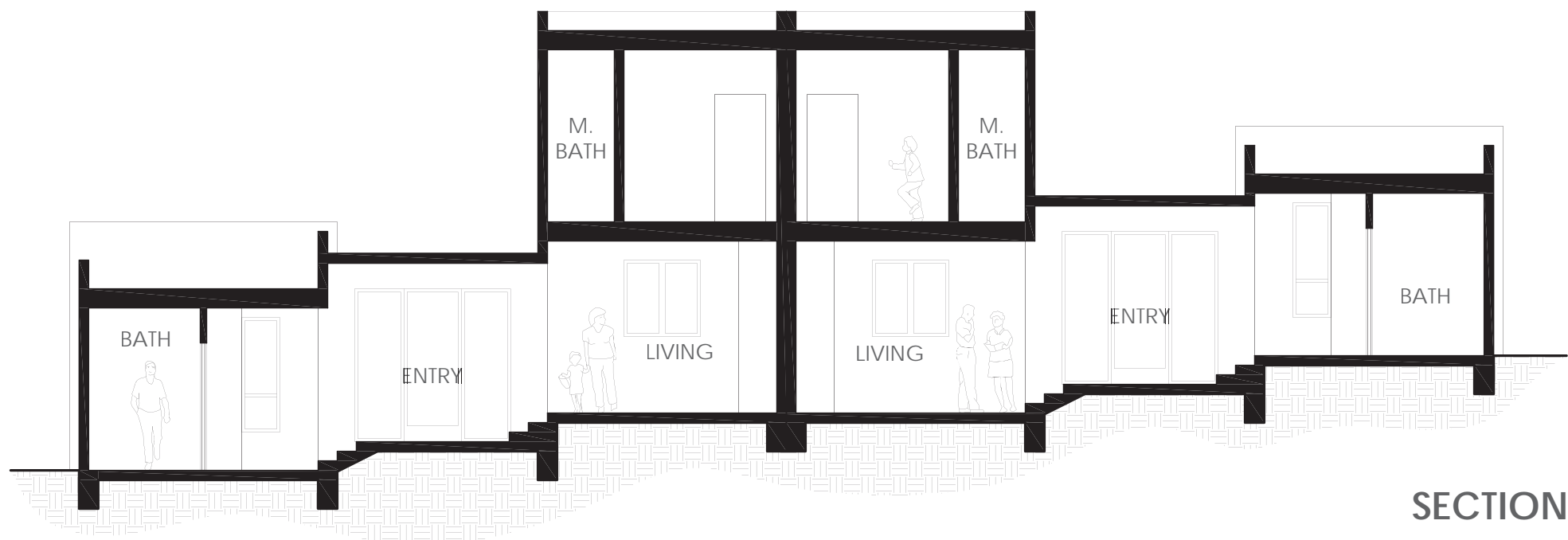


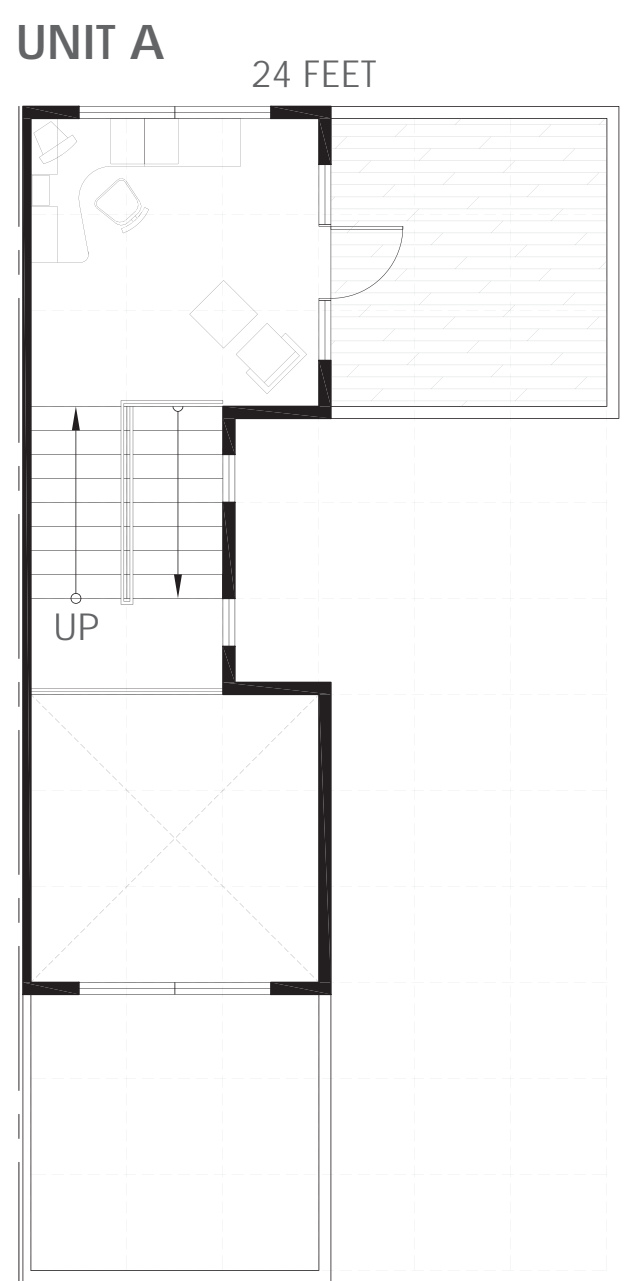
SECTION A



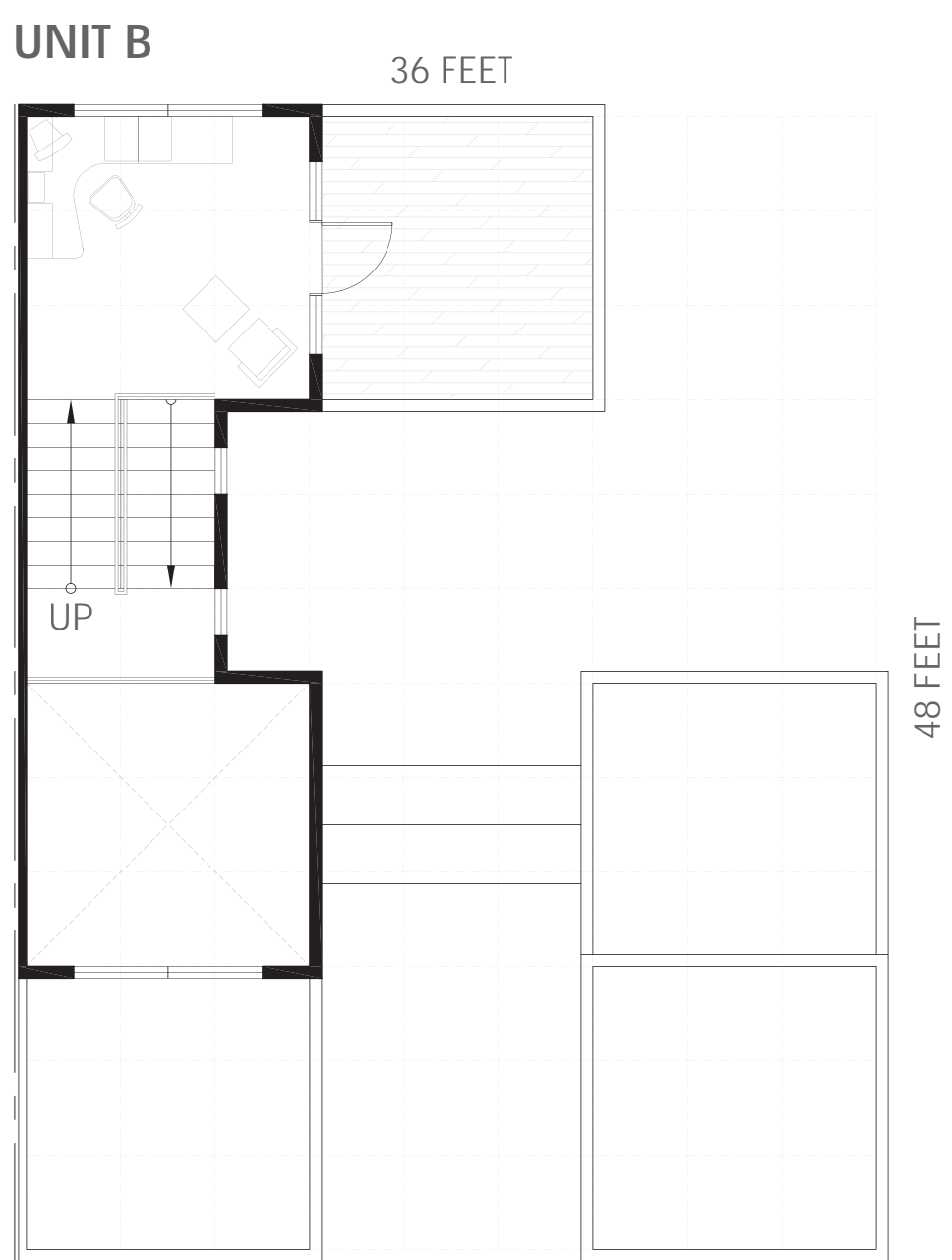
SECTION B



THE HOMES' LIVING SPACES ARE DESIGNED AND PREFABRICATED ON A 12-FOOT BY 12-FOOT MODULE. THE CONNECTING CORRIDORS AND STAIRS ARE BASED ON A 4-FOOT MODULE THAT CAN BE CONSTRUCTED ON-SITE TO ACCOMMODATE DIFFERENT TOPOGRAPHIES. INTERIOR WALLS AND EXTERIOR WINDOWS ARE ON A 2-FOOT MODULE. THIS CONCEPT DESIGN ALLOWS FOR FLEXIBLE ADDITION AND INTERCHANGING OF LIVING SPACES, AFFORDABLE FABRICATION AND INSTALLATION OF UNITS, WHILE MINIMIZING GRADING AND SURFACE WATER RUNOFF.



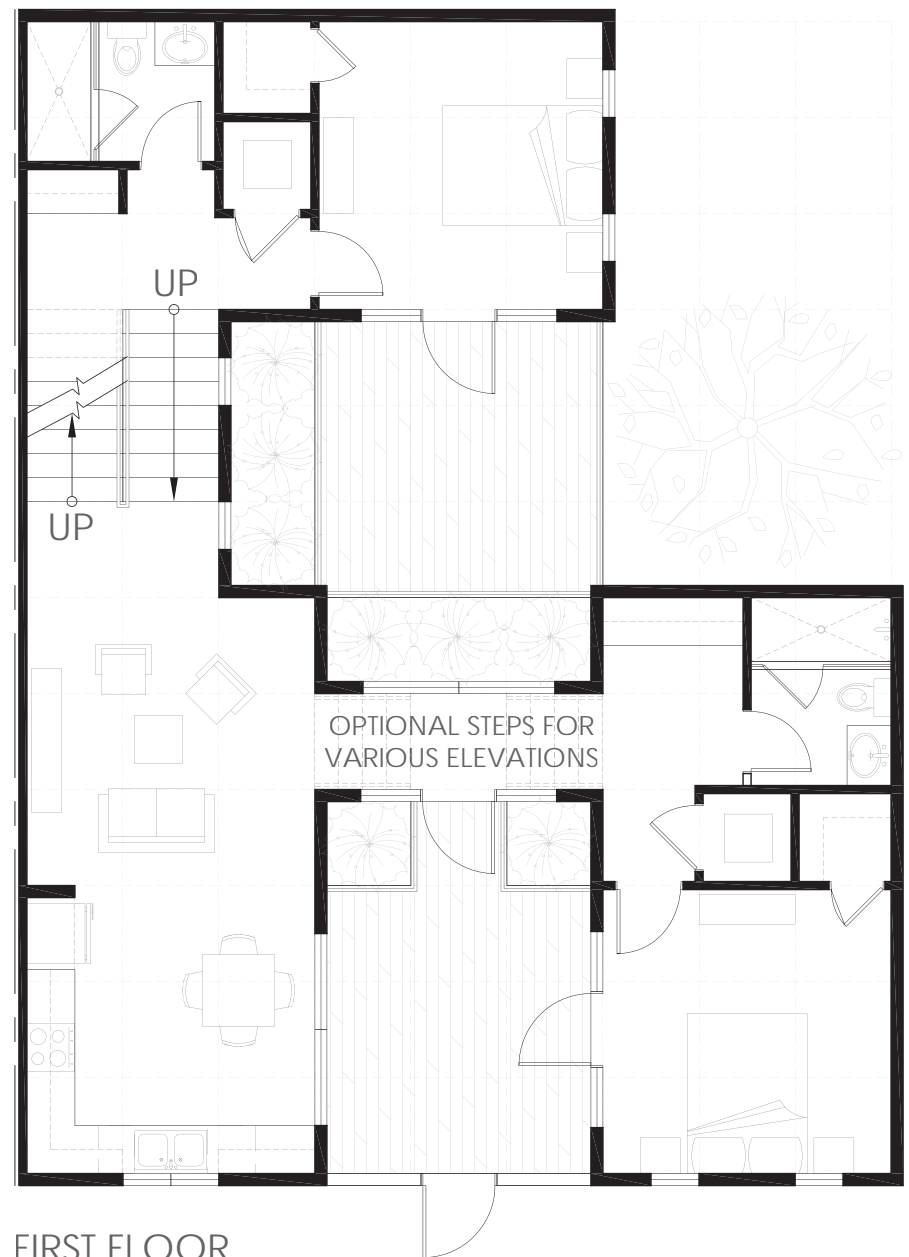
SECOND FLOOR



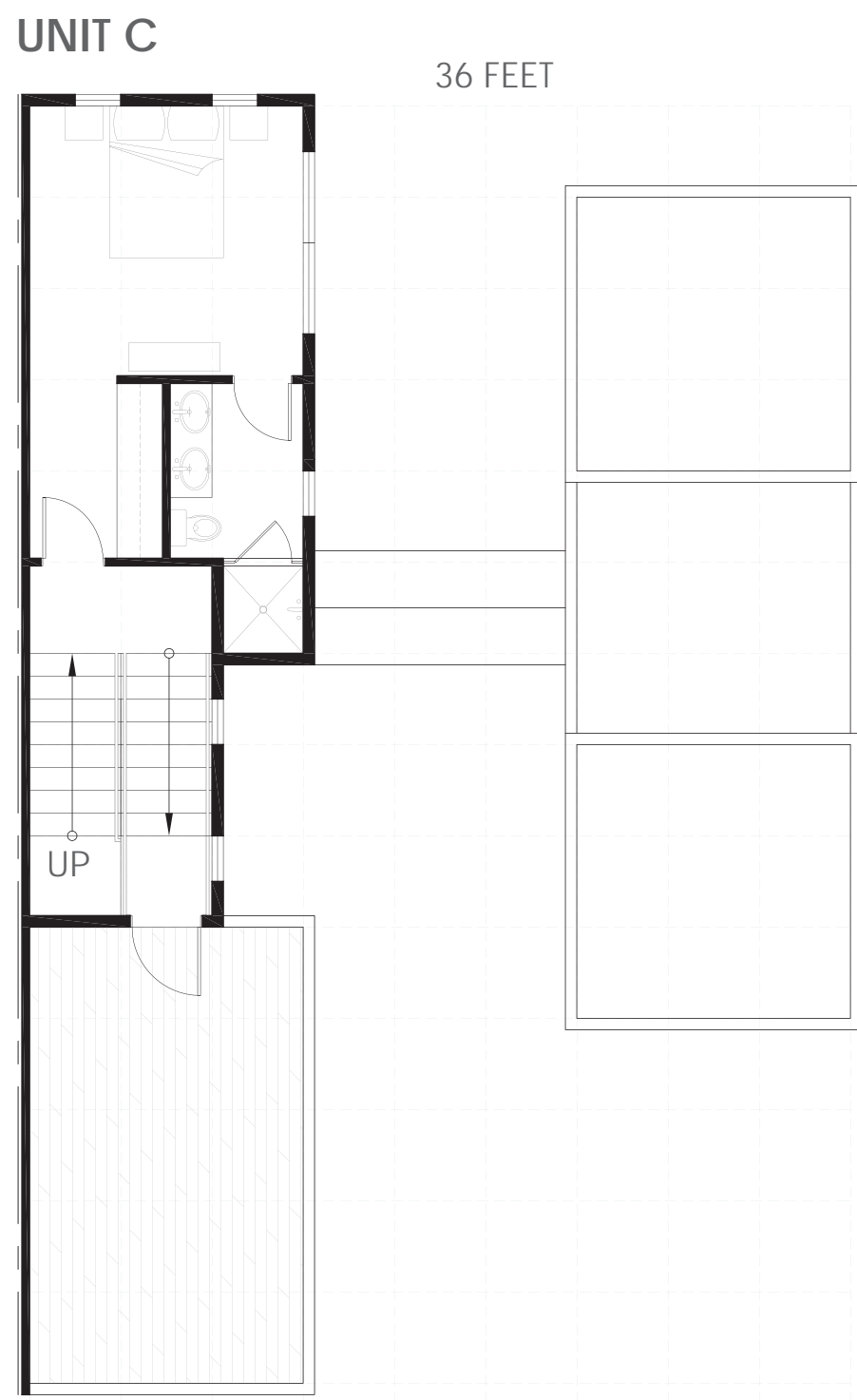
SECOND FLOOR



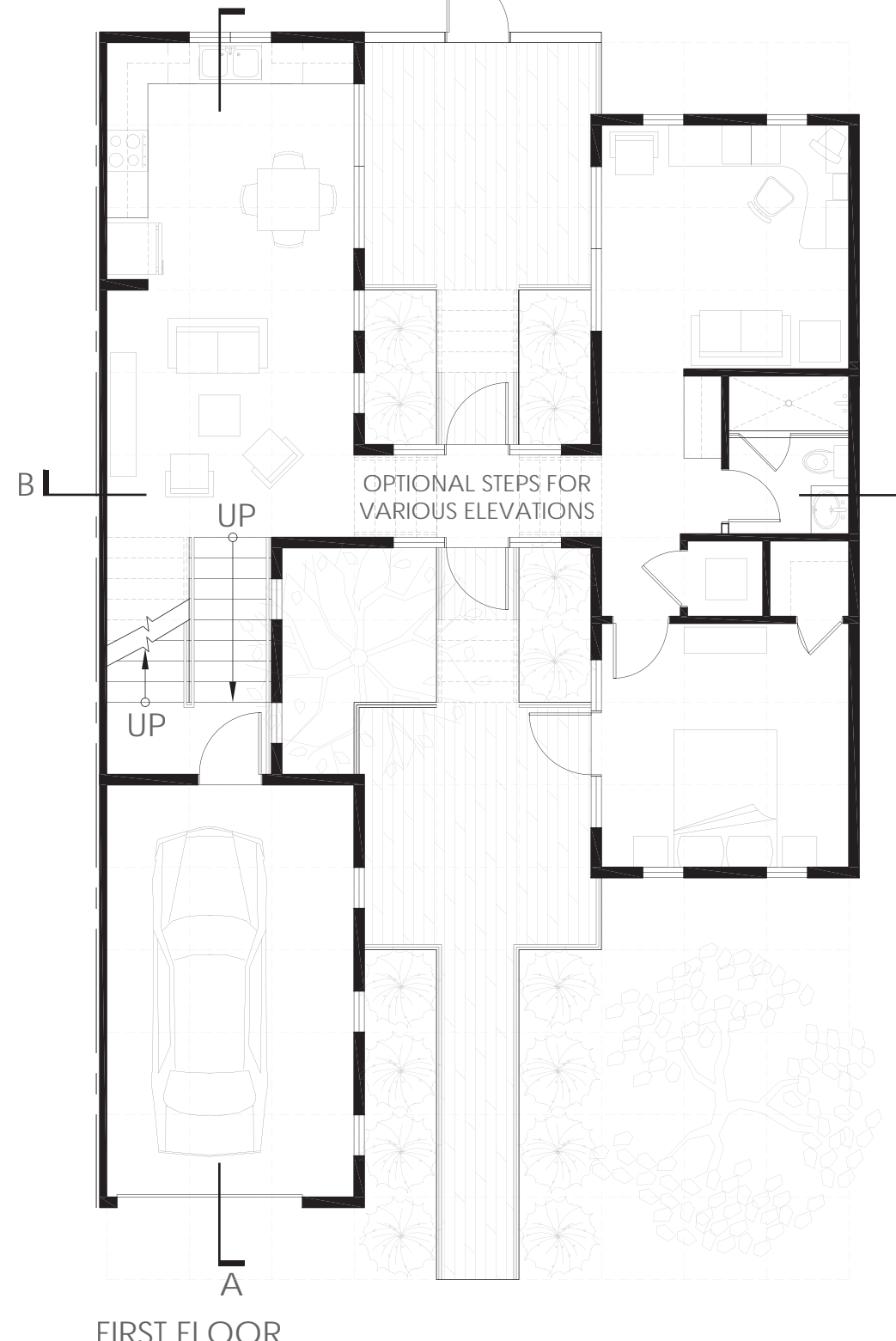
FIRST FLOOR



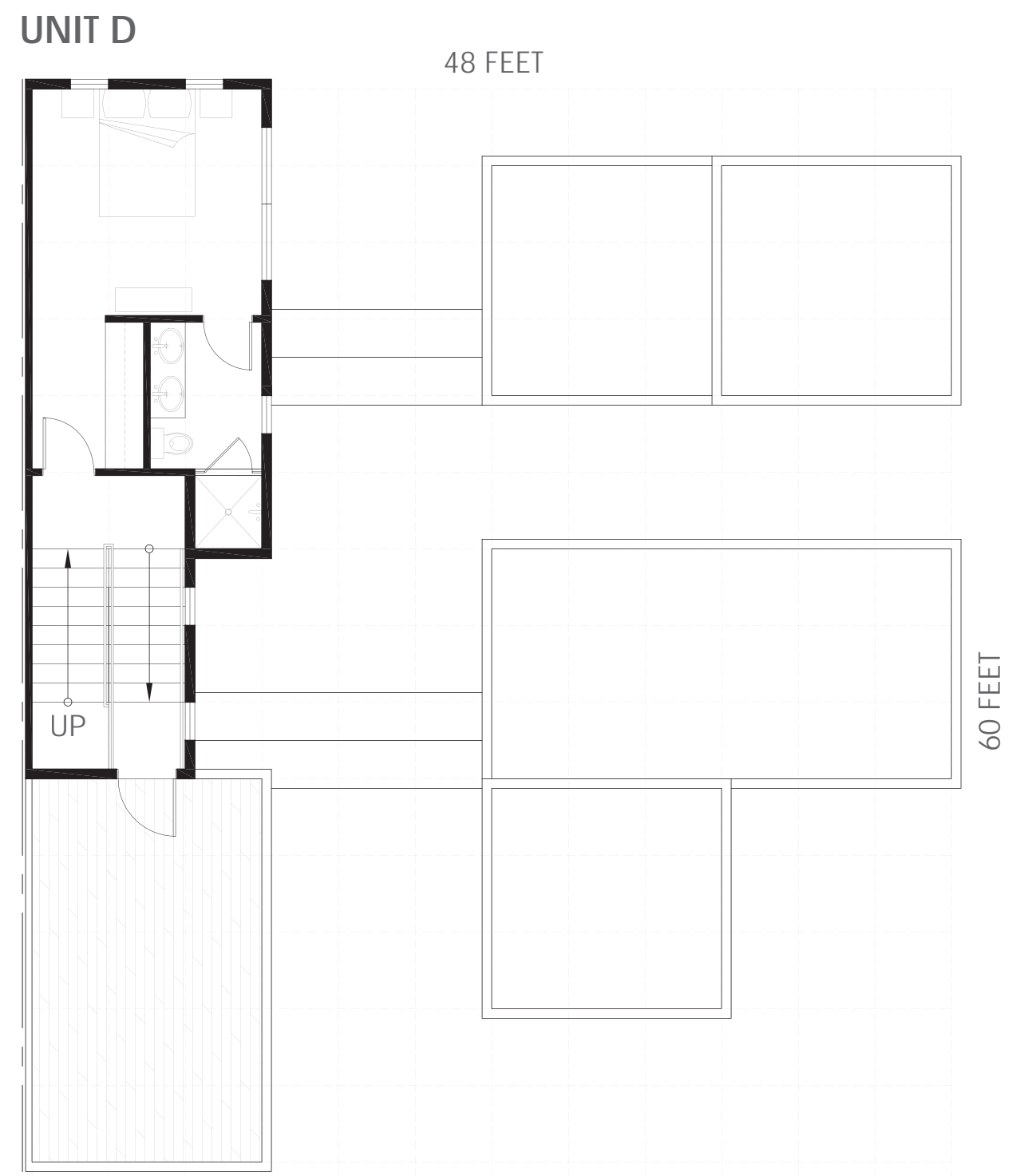
FIRST FLOOR



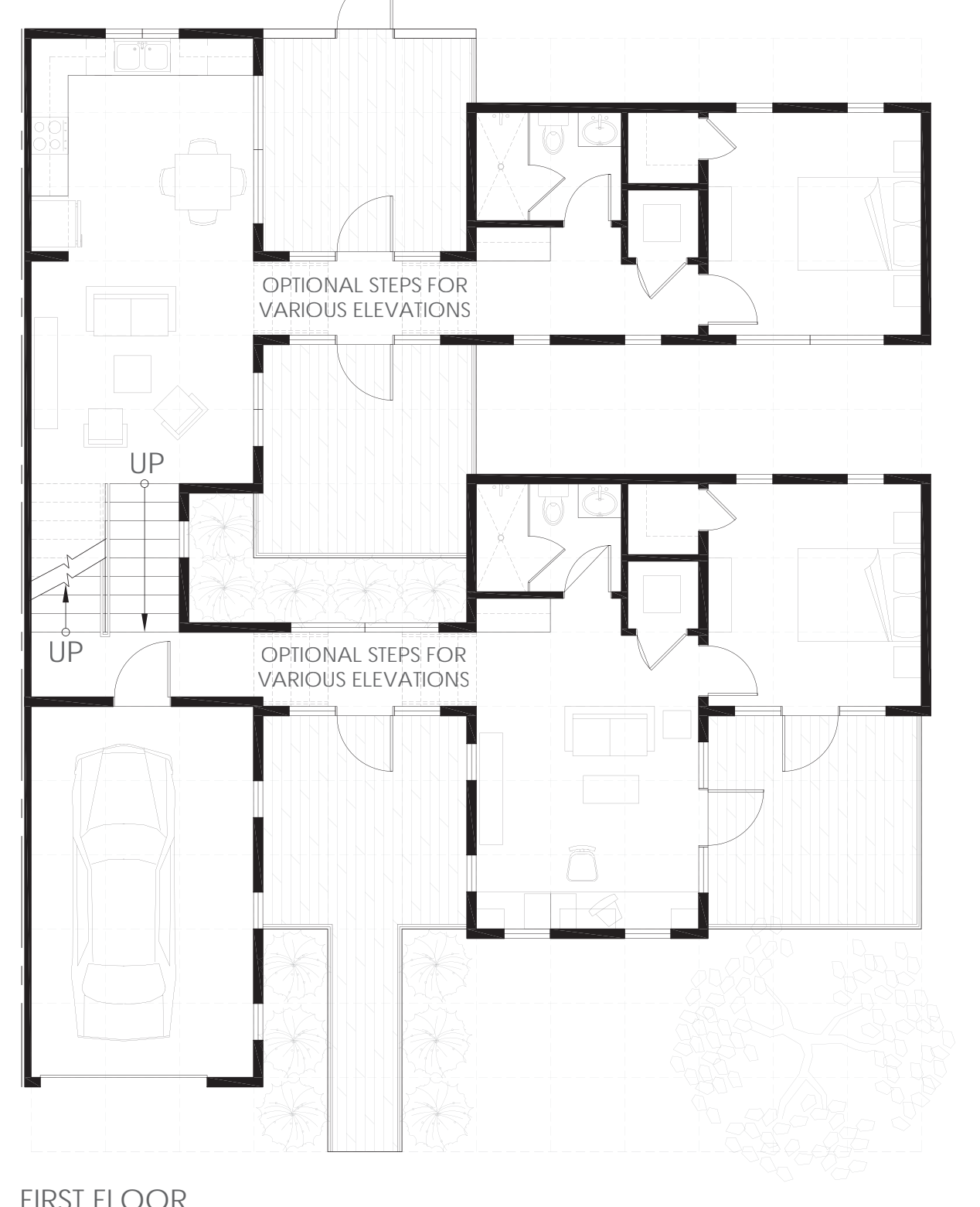
SECOND FLOOR



FIRST FLOOR



SECOND FLOOR



FIRST FLOOR